



FlowMagic - 2100P

FlowMagic Series Portable High Speed Network Traffic Visibility and Analytic Appliance

Applications

- Portable Network Recording and Analytic Appliance ■
- Field Traffic Analysis and Data Extraction ■
- Field Network Health Monitoring and Characterization ■
- On-site Traffic Capture, Analysis and Replay ■
- Security Compliance Assurance ■
- Monitor and Ensure Network Quality Of Service ■

Unified Traffic Visibility Architecture

- Up to 4 Capture Modules with a Wide Selection of Port Specifications
- Lossless Line Rate Capture with Filters
- Gain Instant View Over Packets with Display Filter Support
- Traffic Archiving, Metadata Extraction, Post Processing and Analytics

Integrated Filter Support, Application Classification and Analytics Engine

Complete Visibility Stack

Integrated Packet Decoder with Filter Support; Direct Wire-to-View from WEB UI

Rugged Portable and Lower TCO

Portable and Powerful
Good Price Performance

- **Capture**
- **Analyze**
- **Discover**
- **Manage**

FLOWMAGIC-2100P



Empower Your Management over Network Data

Advanced High Performance, Integrated Wire to View, Wire to Storage Network Visibility and Analytical Appliance, Answering Who, When, What, Where and How At Your Finger Tips. Rugged Portable and Easy to Carry around Solution and Lower TCO.

FlowMagic-2100P

Unified Network Visibility



Essential Tool in Network Monitoring and Forensic Infrastructure

Zero Packet Loss for Line Rate Minimum Size Packet

Flexible Traffic Capture Modes, Operate at Gigabit or Ten Gigabit Mode

Wide Range of Media support: 1G, 10G, 10G-DAC, 1G-SGMII, 25G, 40G & 100G

Integrated Packet Decoder; Gain Instant View Over Packets with Rich Display Filter Support

Rich Built-in Analytic Tools that Provides End Points, Conversation and Content Information

Downstream Tool Integration with Data Export in PCAP format

Integrated Network Quality of Service Sensors and Reputation Score Calculation

Pioneered Role Based Visibility Management Support Fully Authorized Visibility

Programmable API to Automate Operation Tasks and Analysis

Rugged Portable and Easy to Carry around Solution for Working On-site; Low Power Design, Low TCO, Green

Next Generation Device For Total Network Visibility

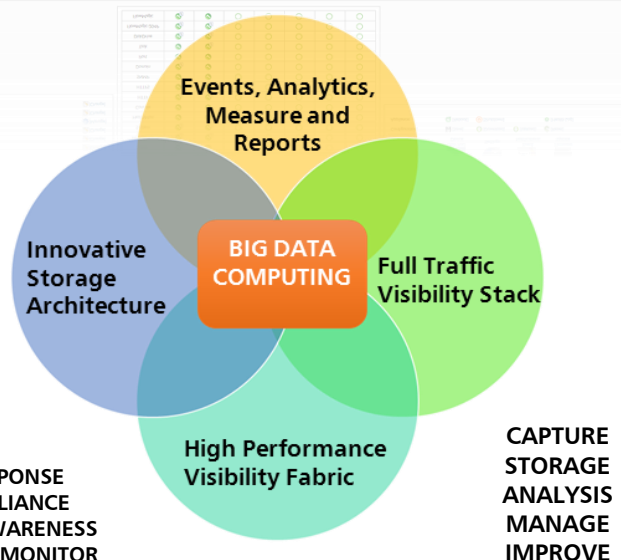
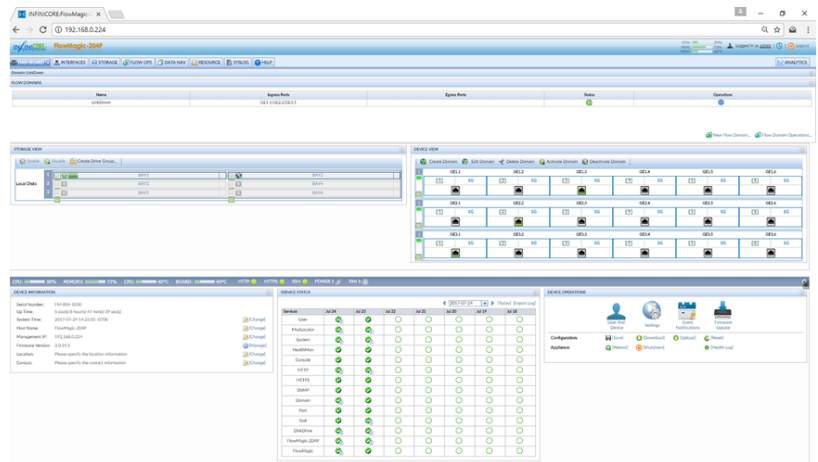
The InfiniCORE™ FlowMagic-2100P is purposefully designed portable appliance to solve high speed visibility and analytical issues that today's network administrators and engineers are facing during their daily tasks. Powered by its unified visibility architecture, the FlowMagic-2100P is an ideal carry around solution for field wire speed network traffic capturing, archiving, analyzing and diagnosis tasks. It is a remarkably easy to use tool with rich analytical features and 5 Terabytes storage capability.

Streamlined, Outstanding Software Package

The FlowMagic-2100P is powered by InfiniOS with comprehensive functionalities available directly in Web Based GUI for management, visibility and analytics. InfiniOS has comprehensive role-based right management to support authorized and differentiated visibility into the data.

Discover The Power of Big Liquid Data

When data is readily available and properly presented, issues can be discovered faster and resolved quickly. The FlowMagic-2100P is a rugged portable appliance in its class that enables customers to work on site and perform capturing, archiving, analysis and debugging tasks wherever they want. The rich analytical features built into the appliance provides a whole new way to help customers to solve network glitches and to ensure the quality of service.



INCIDENT RESPONSE
POLICY COMPLIANCE
SITUATION AWARENESS
CONTINUOUS MONITOR

Contact us

InfiniCORE Inc.
<http://www.infinicoreinc.com>

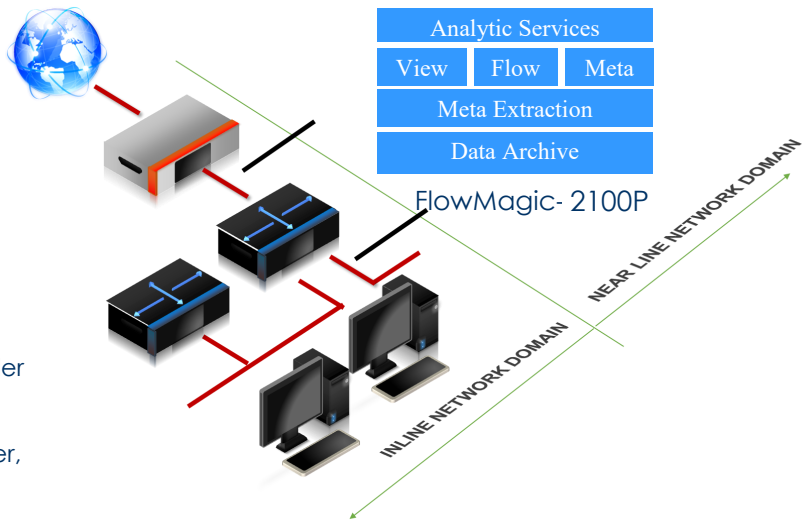
Sales:
sales@infinicoreinc.com
Support:
support@infinicoreinc.com

Highlights of FlowMagic-2100P Use Cases



For Government, Financial and Enterprise Network Monitoring and Forensic Infrastructure

- Essential Tool in Near Line Network Domain
- Single Or Multiple TAP Points Deployment
- Line Rate Packet Capture Performance
- Help Network Meet Regulatory Compliance Such as SOX, PCI and HIPPA
- Direct Wire-to-View Packet Decoder and Analyzer, Diagnosis Made Easier
- Plug-and-Play; Support Light Splitter, SPAN or Inline Mode

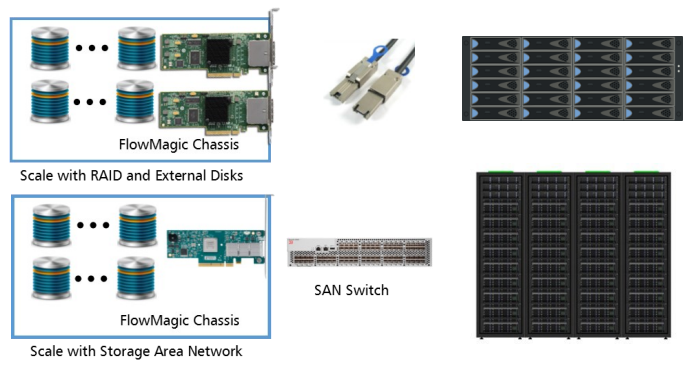


Unified Visibility, Whenever You Need It and Wherever You Need It In Your Network

- Cost Effective Oscilloscope for Network Administrators and Engineers
- Support Sharing Across Multi-User and Work Group with Reservation Management
- Easy to Carry around, Plug and Play. Inline Visibility
- Lossless high performance Data Capture and Analysis
- Easy to Use Web UI Similar to Wireshark for Packet Viewing and Analysis



Scale-Out and Scale-Up Traffic Archival Storage Architecture



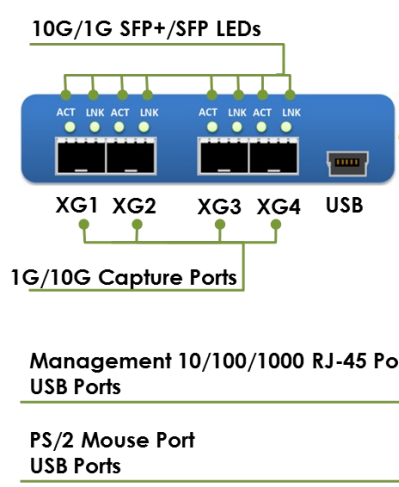
- Purposefully Designed Scale Up and Scale Out Storage Architecture
- Advanced Storage Management and Health Monitoring
- Comprehensive Load Balancing Scheme Among Storage Devices
- Effective Traffic Data Reduction to Maximize Storage Efficiency

All specifications and figures are subject to change without prior notice.
 Actual products may look different from the photos.
 All trademarks and logos are the properties of InfiniCORE Inc. All rights reserved.

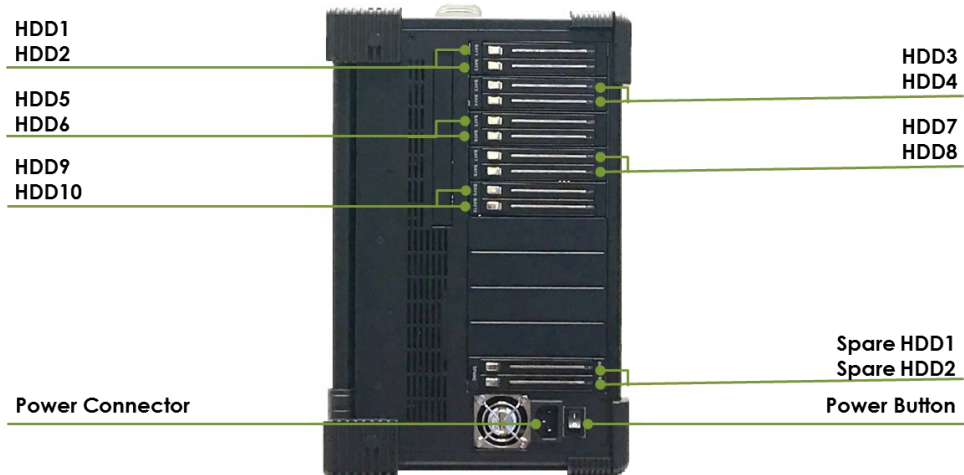
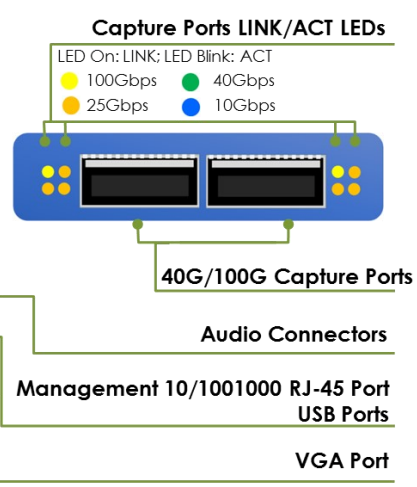
One Stop Total Visibility Into Your Networks

- **Data centers** and **enterprises** that seek traffic visibility into their networks
- **Governments** and **agencies** for network monitoring, forensic collection
- **Service providers** delivering services and applications over IP networks
- **Operators** maintaining networks and standard compliance
- **Third parties** and **labs** performing devices validation and certification

Traffic Module—iNIC-T40G*



Traffic Module— iNIC-T200G*



* Available iNIC Traffic Modules:

Part Number	Port Count	Port Specification
iNIC-T2G/T4G/T6G-RJ45	2, 4 or 6	10Mb/100Mb/1Gb RJ45
iNIC-T2G/T4G/T6G-SFP	2, 4 or 6	10Mb/100Mb/1Gb SFP Fiber
iNIC-T20G-RJ45	2	10Mb/100Mb/1Gb/10Gb RJ45 Copper
iNIC-T20G-SFP	2	1Gb/10Gb SFP/SFP+ Fiber
iNIC-T40G-SFP	4	1Gb/10Gb SFP/SFP+ Fiber
iNIC-T40G	4	1Gb/10Gb SFP/SFP+ Fiber 9.953Gb WAN SFP+ Fiber
iNIC-T50G	2	1Gb/10Gb/25Gb SFP/SFP+/SFP28 Fiber
iNIC-T80G	2	40Gb QSFP+ Fiber
iNIC-T200G	2	40Gb/100Gb QSFP+/QSFP28 Fiber

Contact InfiniCORE Sales sales@infinicoreinc.com
For more information, visit <http://www.infinicoreinc.com>